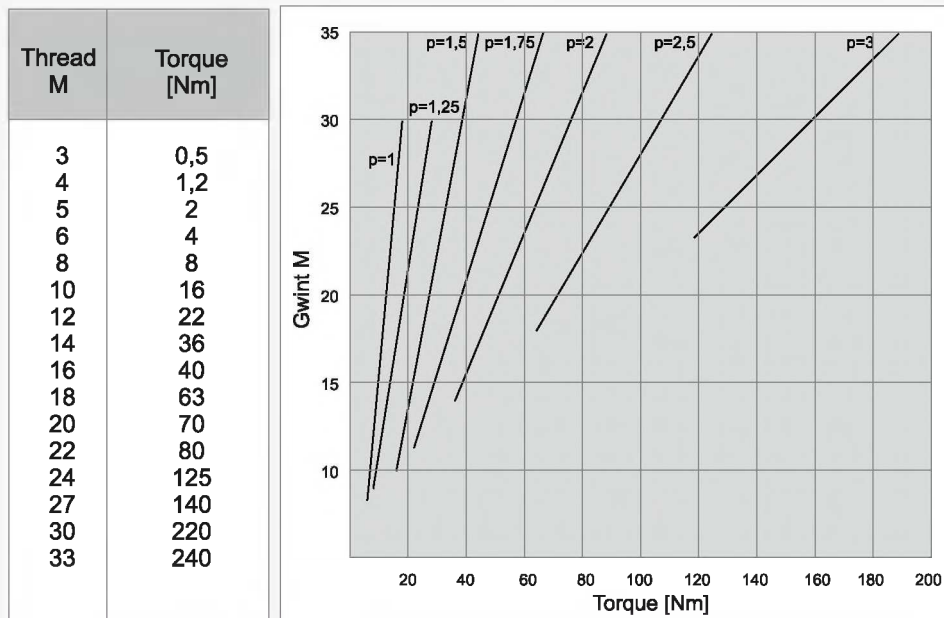




## 6. TOOLHOLDER

### 6.1. Quick-change adapters with safety clutch for taps

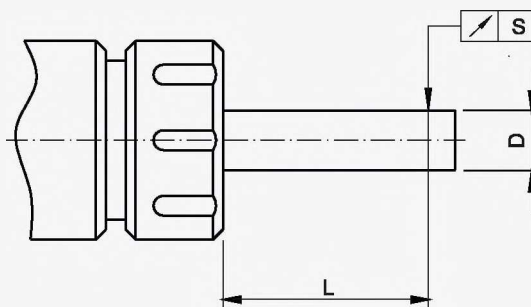
#### RECOMMENDED TORQUE VALUES FOR TAPPED MATERIALS WITH RM=1000 MPA



The values given are approximate and may be different depending on specific operating conditions

### 6.2. ER collets mounting

#### SHANK RUNOUT MOUNTED IN THE ER COLLET



D	L	S
1-1,6	6	0,015
1,6-3	10	0,015
3-6	16	0,015
6-10	25	0,015
10-18	40	0,020
18-26	50	0,020
26-40	60	0,020