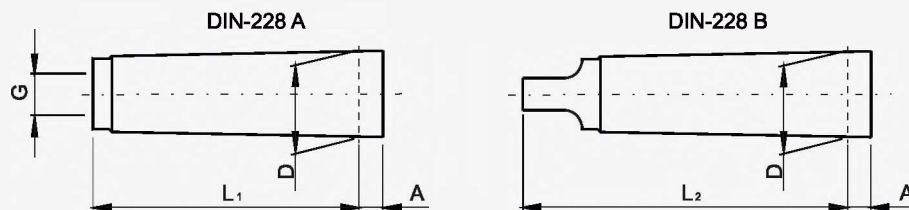




6.4. Toolholders shanks

MORSE DIN-228

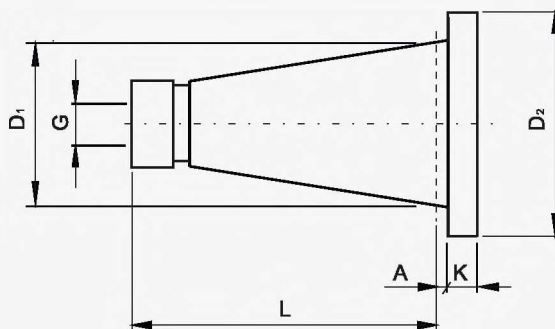


Taper	D	A	L1	L2	G
MK1	12,065	3,5	53,5	62,0	M6
MK2	17,780	5,0	64,0	75,0	M10
MK3	23,825	5,0	81,0	94,0	M12
MK4	31,267	6,5	102,5	117,5	M16
MK5	44,399	6,5	129,5	149,5	M20

Features:

- Toolholders made of nickel-chromium-molybdenum steel, carburized and hardened to 58HRC.
- Connecting surfaces precision grinded in AT3 class.

DIN DIN-2080



Taper	D 1	D 2	L	A	K	G
DIN30	31,75	50,0	68,4	1,6	8	M12
DIN40	44,45	63,0	93,4	1,6	10	M16
DIN50	69,85	97,5	126,8	3,2	12	M24

Features:

- Toolholders made of nickel-chromium-molybdenum steel, carburized and hardened to 58HRC.
- Surface of taper precision grinded in AT3 class.
- Tool sockets made of 0,007 mm maximum runouts.