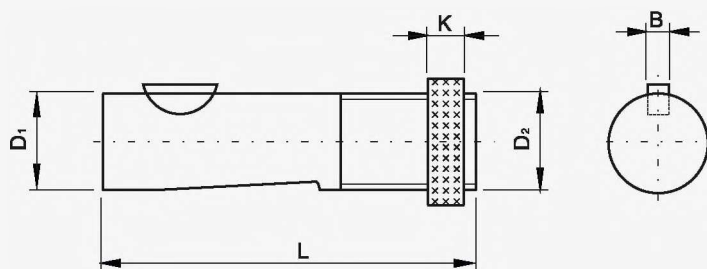


TR DIN-6327

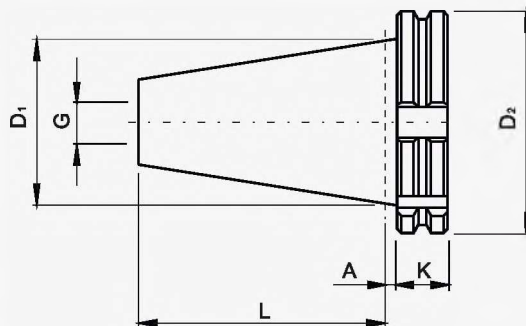


Shank	D 1	D 2	L	B	K
TR20	20	TR20x1,5	88	5	12
TR28	28	TR28x2	95	6	12
TR36	36	TR36x2	118	8	14
TR48	48	TR48x2	144	10	18

Features:

- Toolholders made of nickel-chromium-molybdenum steel, carburized and hardened to 58HRC.
- Precision grinded shank in g5 tolerance.

ISO DIN-69871 A



Taper	D 1	D 2	L	A	K	G
ISO30	31,75	50,00	47,80	3,2	15,9	M12
ISO40	44,45	63,55	68,40	3,2	15,9	M16
ISO50	69,85	97,50	101,75	3,2	15,9	M24

Versions:

- DIN-69871 A - shank without internal cooling
- DIN-69871 AD - with a central hole
- DIN-69871 AD+B - with a central hole and the holes in the flange

Features:

- Toolholders for machines with automatic tool changing
- For toolholder mounting in the machine are used pull studs
- Toolholders made of nickel-chromium-molybdenum steel, carburized and hardened to 58HRC.
- Surface of taper precision grinded in AT3 class.
- Tool sockets made of 0,007 mm maximum runouts.
- Body balanced in G6,3/8000rpm class in standard version