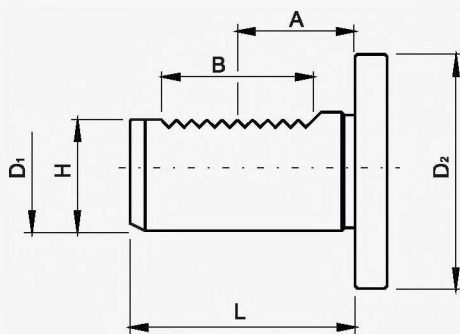


VDI DIN-69880

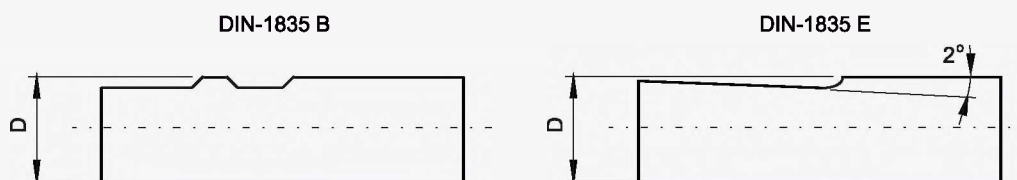


Shank	D 1	D 2	H	L	A	B
VDI20	20	50	18	40	21,7	24
VDI25	25	58	23,5	48	21,7	24
VDI30	30	68	27	55	29,7	40
VDI40	40	83	36	63	29,7	40
VDI50	50	98	45	78	35,7	48

Features:

- Toolholders are made of chrome-manganese steel, carburized and hardened to 58HRC
- Cylindrical surface of shank is grinded in h6 tolerance

CYLINDRICAL DIN-1835



Weldon Shank	D
W20	20
W25	25
W32	32
W40	40
W50	50

Versions:

- DIN-1835 A - straight cylindrical shank
- DIN-1835 B - WELDON: cylindrical shank with flats parallel to the axis of the cylinder
- DIN-1835 E - WHISTLE-NOTCH: cylindrical shank with 2° degrees of flattening

Features:

- Toolholders made of nickel-chromium-molybdenum steel, carburized and hardened to 58HRC.
- Cylindrical surface of shank is grinded in h6 tolerance